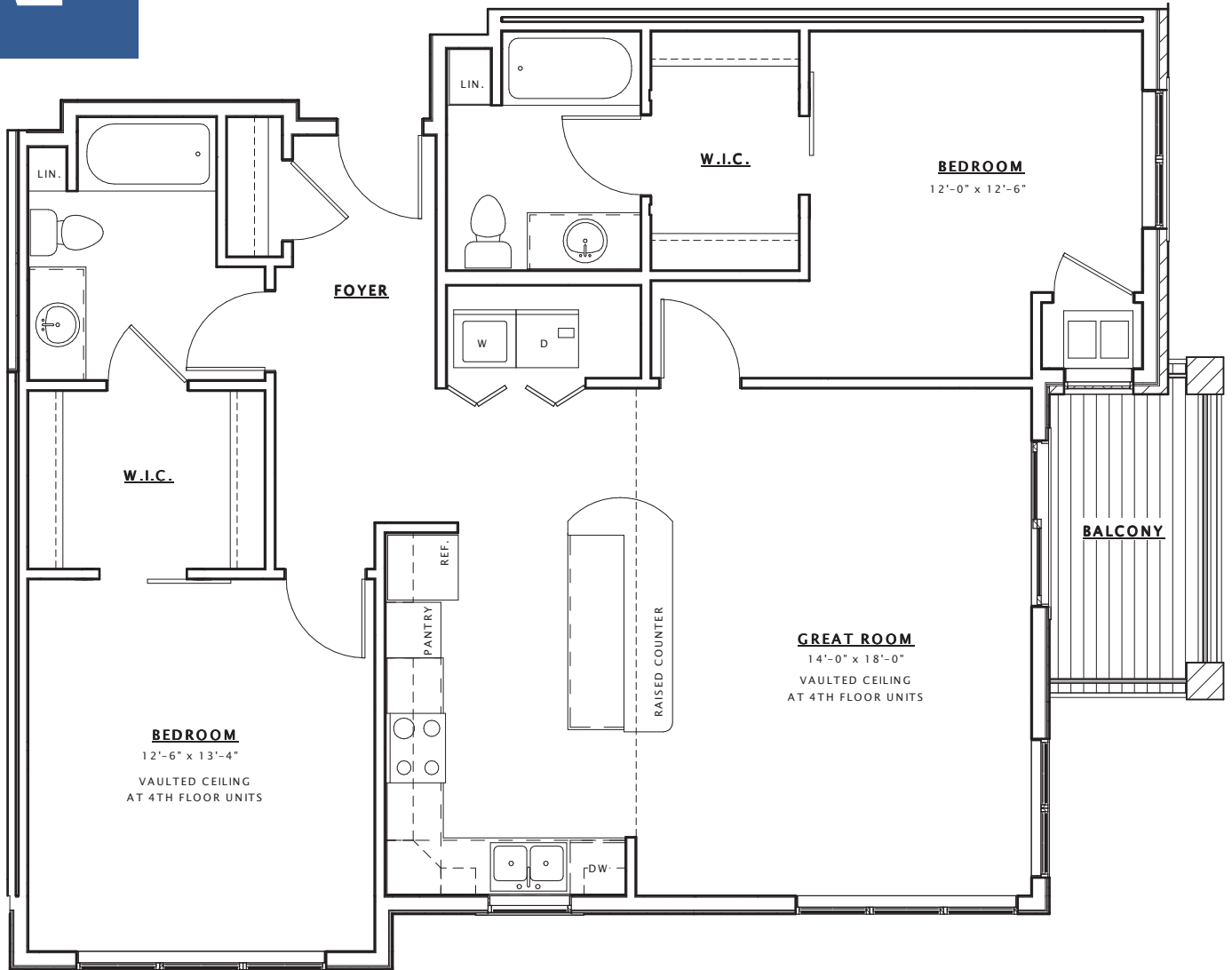


E E2



UNIT 'E' (FLOORS 2-4)

1,221 s.f.

UNIT 'E2' (FLOOR 1)

1,194 s.f.

E Units:

- N201 N301 N401
- N202 N302 N402
- N212 N312 N412
- N213 N313 N413
- S201 S301 S401
- S202 S302 S402
- S212 S312 S412
- S213 S313 S413

E2 Units:

- N101
- N102
- N111
- N112
- S101
- S102
- S111
- S112